

WRAPAROUND

Intensive Care Coordination (ICC)

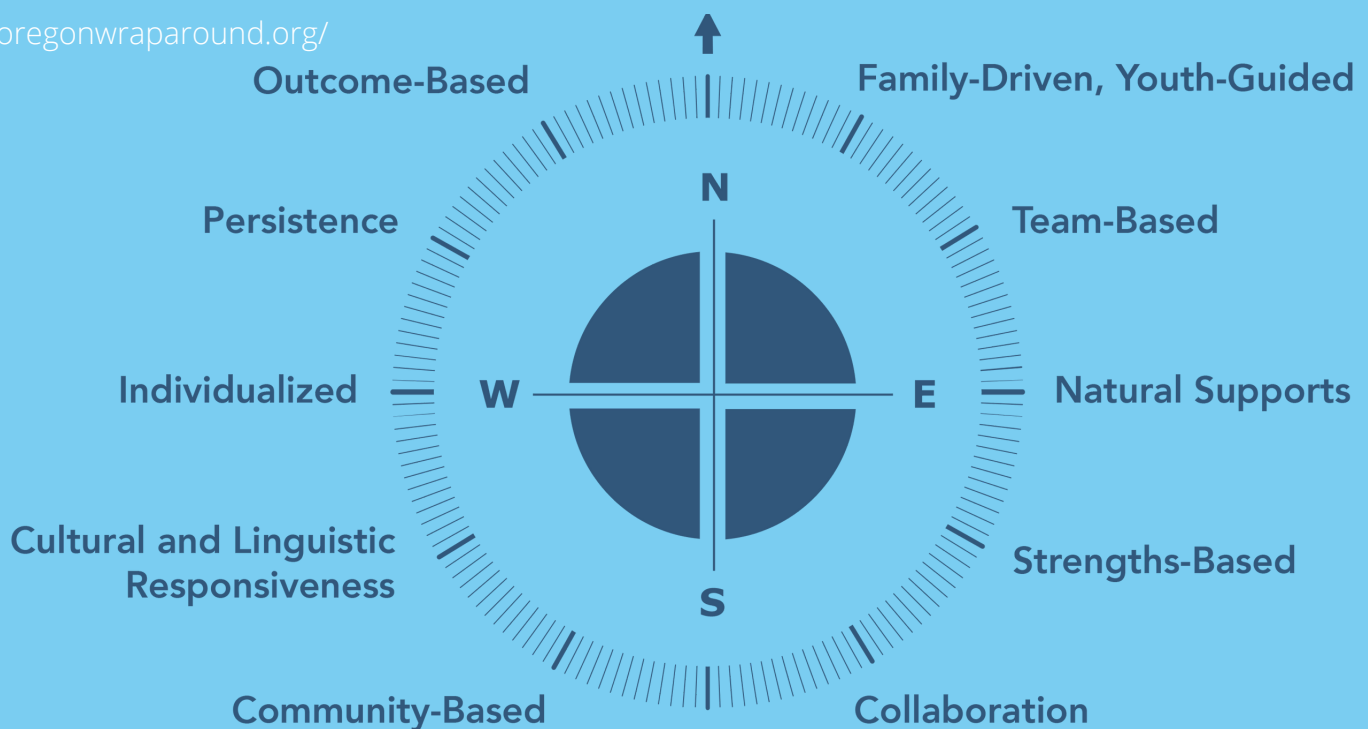
FOR CHILDREN, YOUTH, & FAMILIES 0-18



Team based planning and mental health services
Youth driven to address needs and build on strengths.
Youth work with a facilitator to build their Wraparound team, which can include friends, family, service providers and others.

WRAPAROUND PRINCIPLES

<https://oregonwraparound.org/>



WHATS IN IT FOR ME?

• Team-Based Planning • Outreach and Engagement • Assessment • Care Coordination • Individual, Group and Family Therapy • Substance Use Recovery • Education and Employment Assistance • Peer Support Services • Nursing Services • Recreation Activities • Multi-Family Group • Parenting Classes • Skills Training • Medication Management • Case Management



ALL THESE SERVICES CAN BE ACCESSED WITH OR WITHOUT WRAPAROUND

HOW TO ACCESS WRAPAROUND SERVICES:*

Children and youth ages 0-18 are eligible if they live in Douglas County and are:

- Receiving OHP benefits
- Experiencing mental health challenges
- Receiving services from multiple agencies
- Interested in Wraparound/ ICC services
- At risk for out of home placement



Provider Referral>> Review Committee>> Acceptance

*Youth placed at the following levels of care are automatically accepted into Wraparound: Secure Adolescent Inpatient Program (SAIP), Secure Children's Inpatient Program (SCIP), Psychiatric Residential Treatment Services (PRTS), or Commercially Sexually Exploited Children's (CSEC) residential program.

ALL UMPQUA HEALTH ALLIANCE MEMBERS ARE ENTITLED TO CARE COORDINATION WHICH CAN:

- CONNECT YOU TO COMMUNITY SERVICES AND RESOURCES
- ASSESS YOUR NEEDS AND HELP YOU DEVELOP A CARE PLAN
- COORDINATE YOUR HEALTHCARE
- SCHEDULE TRANSPORTATION TO DOCTOR APPOINTMENTS



- HELP WITH SETTING UP DOCTOR AND DENTIST APPOINTMENTS
- SUPPORT AND HELP YOU NAVIGATE THROUGH THE HEALTHCARE SYSTEM
- PLAN TRANSITION AND DISCHARGE SUPPORT SERVICES
- REQUEST HEALTH RELATED FUNDS
- AND MUCH MORE..

TO REQUEST THIS INFORMATION IN AN ALTERNATE FORMAT, PLEASE CALL (541) 229-4842 OR SEND AN EMAIL TO DOUGLASSOC@UMPQUAHEALTH.COM

BEHAVIORAL HEALTH



Intensive/Integrated Care Coordination
FOR CHILDREN, YOUTH, & FAMILIES 0-18

SERVICES REQUIRING PRIOR AUTHORIZATIONS



Behavioral Health Inpatient and Residential Treatment Services

- Psychiatric Residential Treatment Services (PRTS)
- Acute Rehabilitation
- Psychiatric Inpatient Hospital

Behavioral Health Outpatient

- Psychological Evaluations
- Electroconvulsive Therapy (ECT)
- Applied Behavior Analysis (ABA)
- Transcranial Magnetic Stimulation (TMS)
- Intensive In-Home Behavioral Health (IIBHT)

Substance Use Disorder (SUD)

- Detox
- Partial Hospitalization
- Residential

Physical Therapy Occupational Therapy Speech Therapy Services

- After the first 8 visits per diagnosis/condition.



WHEN WILL I KNOW IF MY PRIOR AUTHORIZATION WAS APPROVED?

Behavioral Health Inpatient and Residential Treatment Services

- 72 hours

Behavioral Health Outpatient

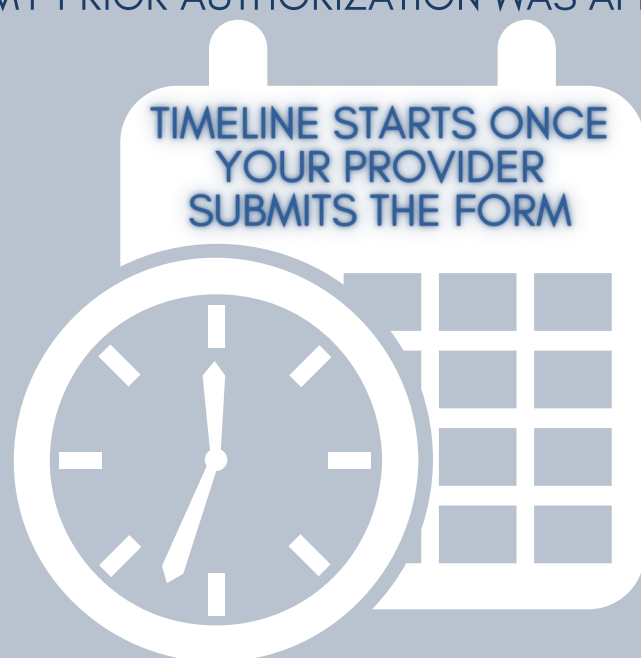
- 14 days

Substance Use Disorder (SUD)

- 48 hours

Physical Therapy, Occupational Therapy & Speech Therapy Services

- 14 days



PRIOR AUTHORIZATIONS: THE GATEWAY TO SOME SERVICES

- 1 YOU AND YOUR PROVIDER DECIDE ON A TREATMENT
- 2 YOUR PROVIDER SENDS A REQUEST TO YOUR INSURANCE
- 3 THE REQUEST IS REVIEWED TO BE SURE IT IS NECESSARY

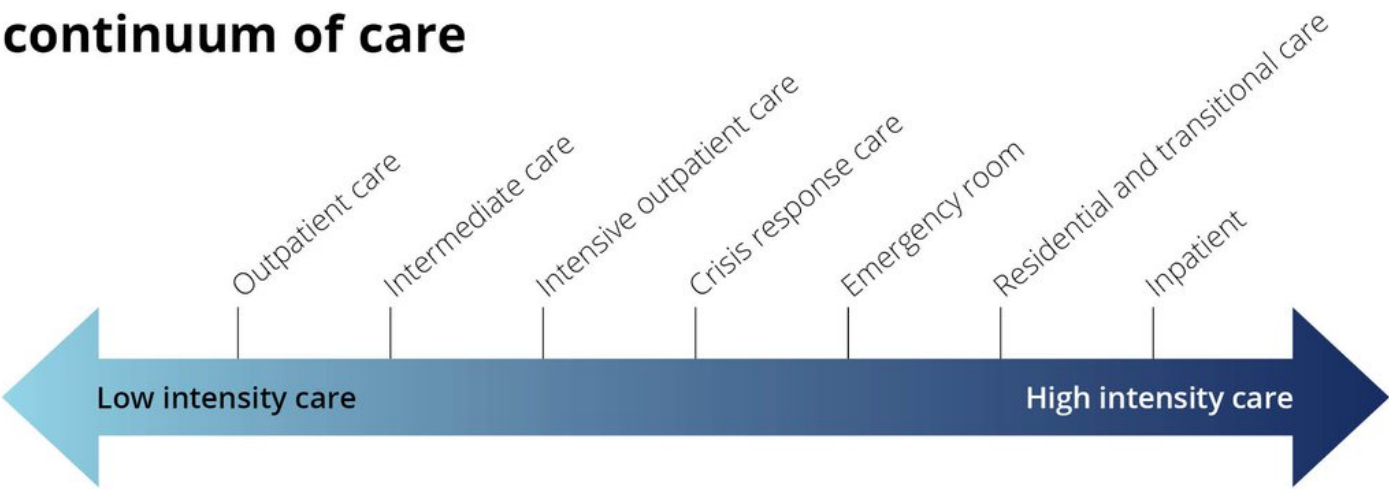
IF YOU ARE INTERESTED IN A SERVICE, SUPPORT, OR PROGRAM
AND YOU'RE UNSURE HOW TO ACCESS IT YOU CAN:

ASK YOUR
WRAPAROUND CARE
COORDINATOR

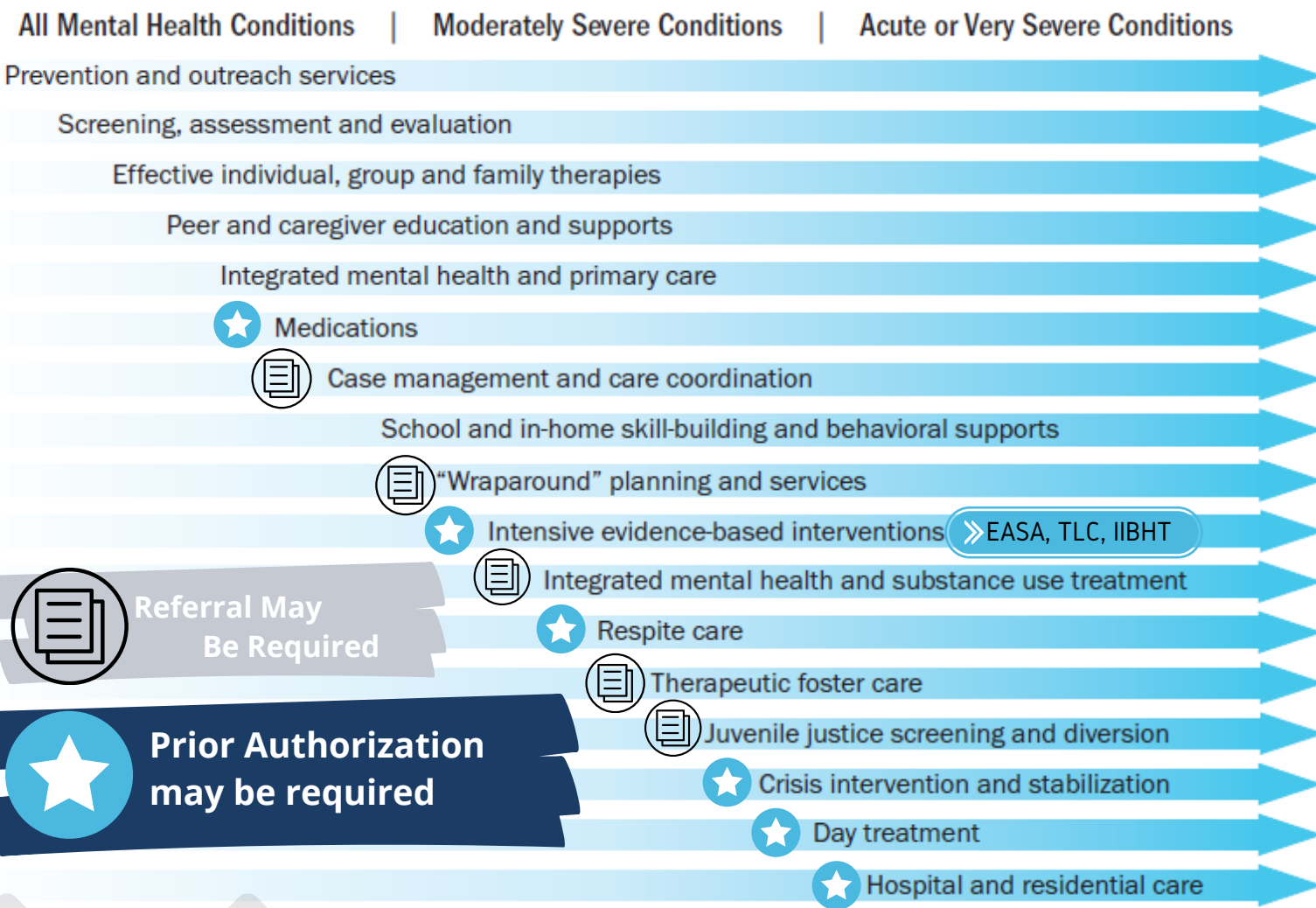
CALL UHA AND REQUEST TO BE
CONNECTED TO A BEHAVIORAL
HEALTH CARE COORDINATOR

TO REQUEST THIS INFORMATION IN AN ALTERNATE
FORMAT, PLEASE CALL (541) 229-4842 OR SEND AN EMAIL
TO DOUGLASSOC@UMPQUAHEALTH.COM

continuum of care



BEHAVIORAL HEALTH SERVICES



WHO SHOULD I ASK FOR A REFERRAL?

SYSTEM OF CARE
DOUGLAS

DouglasSOC@umpquahealth.com

adapt
Integrated Health Care

548 SE Jackson St.
Roseburg, OR 97470
Phone: (541) 440-3532
24 hour Crisis Line 800-866-9780
wraparound@adaptoregon.org

UMPQUA HEALTH

541-229-4842
Behavioralhealth@umpquahealth.com
UHACustomer@umpquahealth.com

TO REQUEST THIS INFORMATION IN AN ALTERNATE
FORMAT, PLEASE CALL (541) 229-4842 OR SEND AN EMAIL
TO DOUGLASSOC@UMPQUAHEALTH.COM